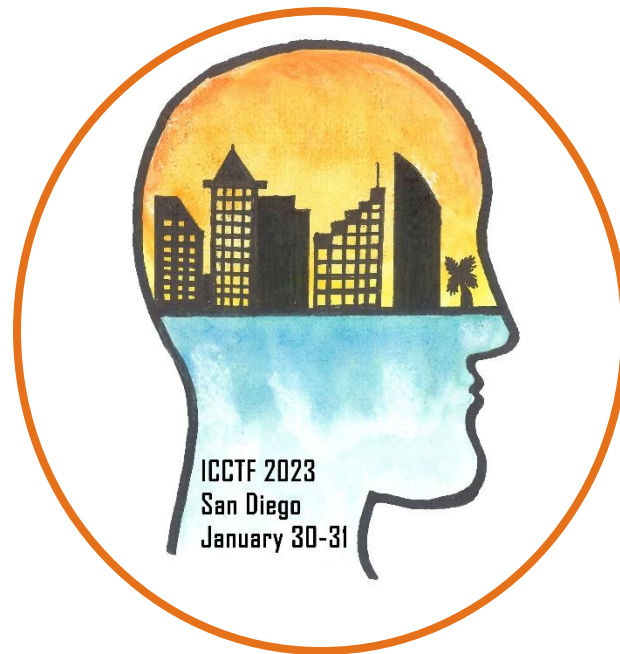


**8TH BIENNIAL
INTERNATIONAL COGNITION AND
CANCER TASK FORCE
MEETING**

**JANUARY 30-31, 2023
SAN DIEGO, CALIFORNIA**



KEYNOTE SPEAKERS:

JUDITH CARROLL, PHD (THE UNIVERSITY OF CALIFORNIA, LOS ANGELES, USA)

KIRK ERICKSON, PHD (THE UNIVERSITY OF PITTSBURGH, USA)

BENJAMIN HAMPSTEAD, PHD (THE UNIVERSITY OF MICHIGAN, USA)

CARRIE MCDONALD, PHD (THE UNIVERSITY OF CALIFORNIA, SAN DIEGO, USA)

MICHELLE MONJE, MD, PHD (STANFORD UNIVERSITY, USA)

KRISTINE WALHOVD, PHD (THE UNIVERSITY OF OSLO, NORWAY)

ICCTF DRAFT PROGRAM: MAIN CONFERENCE

MONDAY JANUARY 30TH

08.00 – 09.00

CONFERENCE REGISTRATION

12.30 - 14.00

LUNCH

09.00 – 09.10

INTRODUCTION AND WELCOME

14.00 - 15.00

KEYNOTE. *MICHELLE MONJE, MD, PHD*
NEURAL-IMMUNE INTERACTIONS IN
COGNITIVE IMPAIRMENT FOLLOWING
CANCER THERAPY OR COVID

09.10 – 10.10

KEYNOTE: *KRISTINE WALHOVD, PHD*
IDENTIFYING FACTORS INFLUENCING
BRAIN AND COGNITION IN A LIFESPAN
PERSPECTIVE

15.00 - 15.40

ORAL PRESENTATIONS

10.10- 10.30

REFRESHMENT BREAK

15.00 – 15.20

Oral Presentation #4

15.20 – 15.40

Oral Presentation #5

10.30 - 11.30

KEYNOTE. *JUDITH CARROLL, PHD*
SLEEP, BIOLOGICAL AGING, AND
COGNITION IN WOMEN SURVIVING
BREAST CANCER

15.40 – 16.00

REFRESHMENT BREAK

11.30 - 12.30

ORAL PRESENTATIONS

16.00 – 16.40

ORAL PRESENTATIONS

11.30 - 11.50

Oral Presentation #1

11.50 - 12.10

Oral Presentation #2

12.10 - 12.30

Oral Presentation #3

16.00 – 16.20

Oral Presentation #6

16.20 – 16.40

Oral Presentation #7

18.00 – 21.00

ICCTF SOCIAL EVENT

ICCTF DRAFT PROGRAM: MAIN CONFERENCE

TUESDAY JANUARY 31ST

09.00 – 10.00

KEYNOTE. *CARRIE MCDONALD, PHD*
MICROSTRUCTURAL INJURY AND
COGNITIVE DECLINE FOLLOWING
RADIATION THERAPY IN ADULTS WITH
PRIMARY BRAIN TUMORS: HOW MUCH
COLLATERAL WHITE MATTER CAN WE
SPARE?

10.00 – 10.20

REFRESHMENT BREAK

10.20 – 11.20

ORAL PRESENTATIONS

10.20 -10.40

Oral Presentation #8

10.40 - 11.00

Oral Presentation #9

11.00 - 11.20

Oral Presentation #10

11.20- 12.20

KEYNOTE. *KIRK ERICKSON, PHD*
EXERCISE AND NEUROCOGNITIVE
FUNCTION IN BREAST CANCER

12.20- 14.30

LUNCH

14.30 - 15.30

KEYNOTE. *BENJAMIN HAMPSTEAD, PHD*
NON-PHARMACOLOGIC INTERVENTIONS
FOR ENHANCING COGNITIVE, EMOTIONAL
AND EVERYDAY FUNCTION – LESSONS
FROM NEURODEGENERATION

15.30 - 16.30

ORAL PRESENTATIONS

15.30 – 15.50

Oral Presentation #11

15.50 – 16.10

Oral Presentation #12

16.10 - 16.30

Oral Presentation #13

16.30 – 17.00

SUMMARY, TRAINEE AWARDS,
INTRODUCTION TO POSTER RECEPTION

17.30 – 19.30

WINE AND TAPAS POSTER RECEPTION

